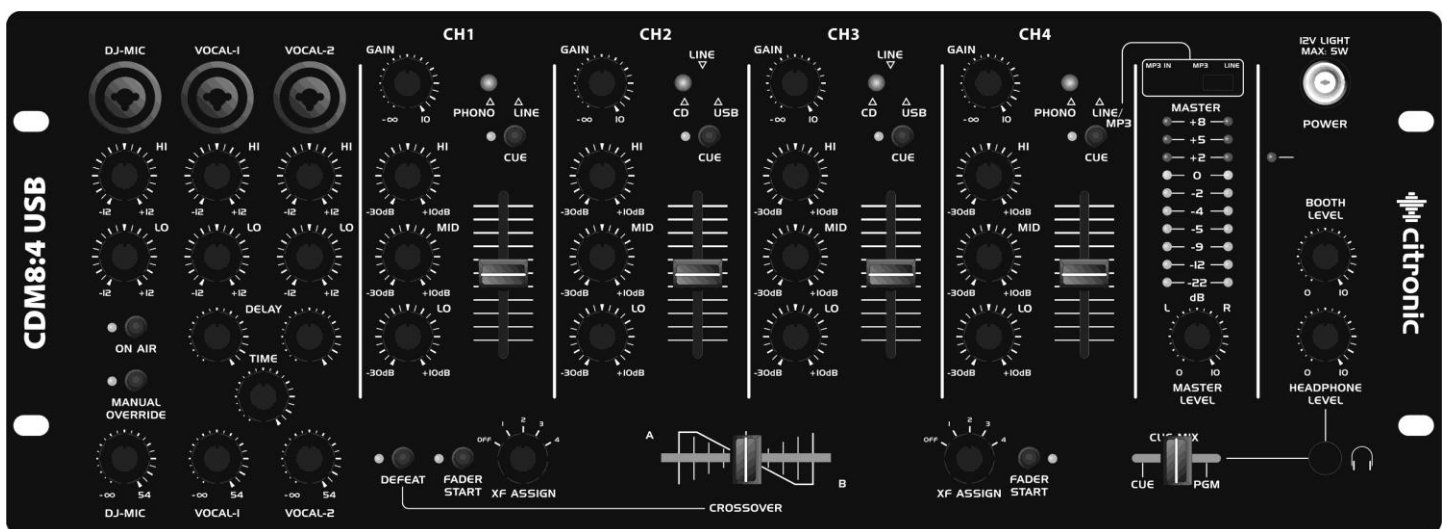


# CDM8:4 USB

Citronic CDM8:4 USB

Order ref: 172.776UK

User Manual



Version 1.1



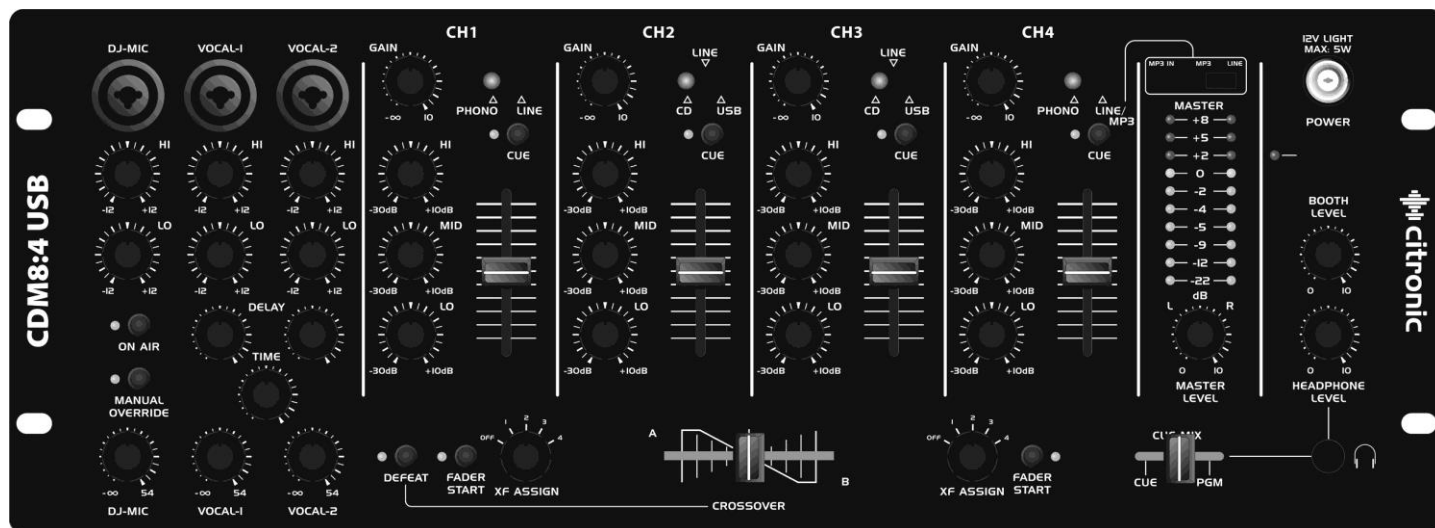
Caution: Please read this manual carefully before operating  
Damage caused by misuse is not covered by the warranty

## Introduction

Thank you for purchasing the Citronic CDM8:4 USB Rackmount DJ Mixer.

This product is intended to give long term, reliable service in normal usage.

Please read these instructions before use to avoid incorrect operation and to help outline the functions and controls.



## Maintenance

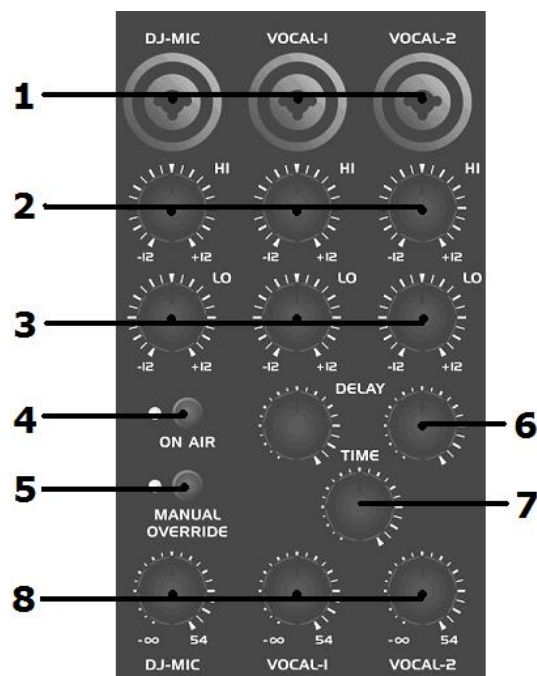
No user serviceable parts inside, refer all servicing issues to qualified service personnel. Clean with a lint-free dry or damp cloth. To replace crossfader, disconnect mains and undo the 2 securing screws slightly, lift the crossfader and disconnect from the in-line connector (noting the correct orientation). Connect the new crossfader, reposition and secure with the 2 screws.

## Packing Contents

- IEC Mains cable
- CDM8:4 USB 19" DJ Mixer
- Instruction Manual

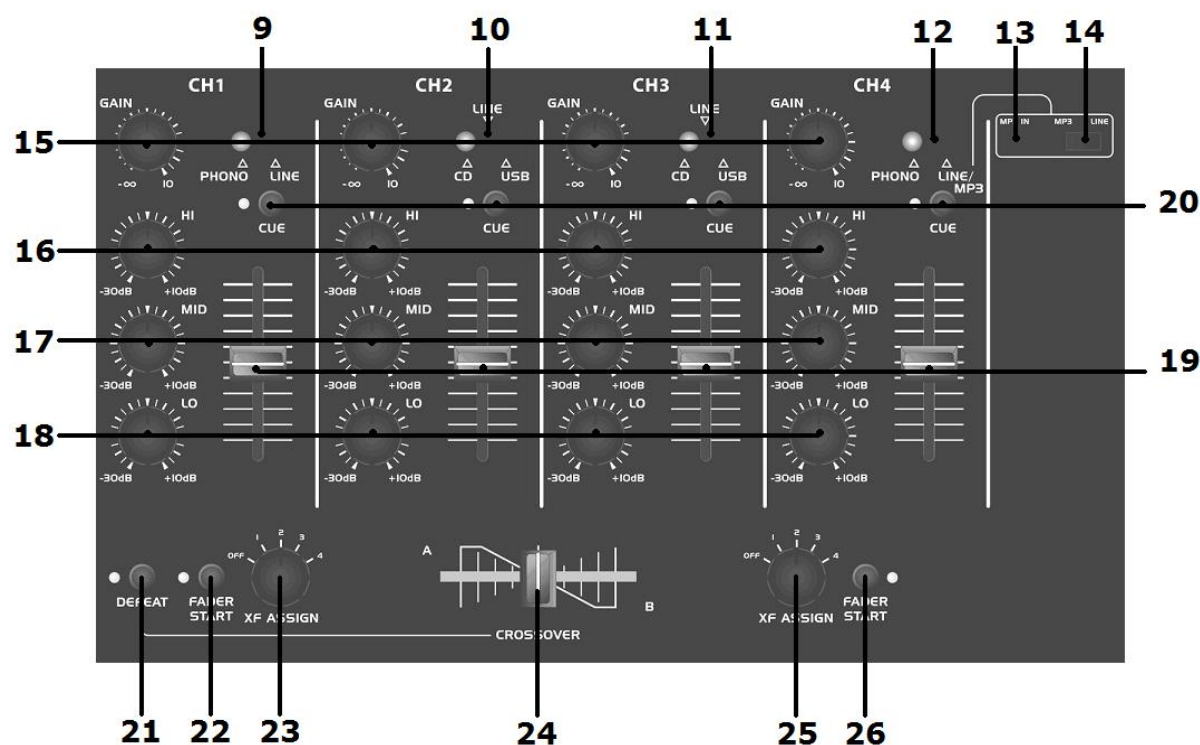
## Controls

### Microphone Section:



1. **MICROPHONE** - Combo XLR and 6.3mm jack inputs for DJ mic and 2 Vocal mics
2. **Hi EQ** – High frequency cut/boost for mic inputs
3. **Lo EQ** – Low frequency cut/boost for mic inputs
4. **ON AIR** – Switches on or mutes DJ Mic
5. **MANUAL OVERRIDE** – Reduces music level to allow DJ mic talk-over
6. **DELAY** – Delay effect level for Vocal mics 1 + 2
7. **TIME** – Time setting for vocal delay effect
8. **MIC LEVELS** – Individual level for DJ mic and 2 vocal mics

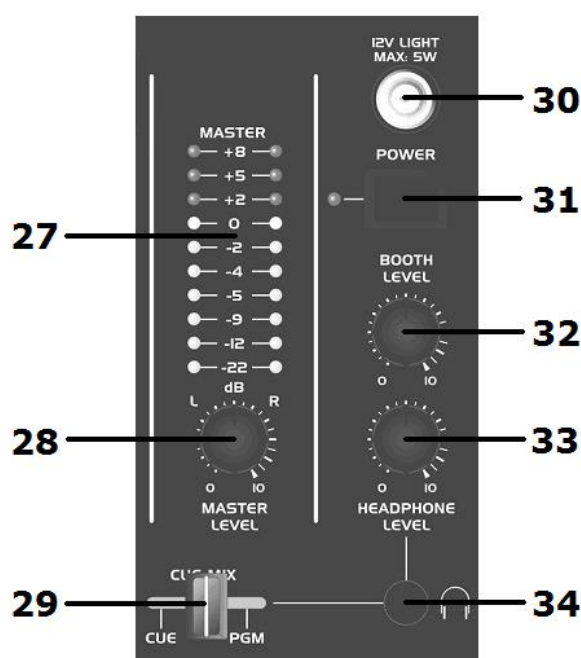
## Stereo Section:



9. **CH.1 PHONO/LINE** – Input selector for channel 1, turntable or line input
10. **CH.2 CD/LINE** – Input selector for channel 2, CD player or line input
11. **CH.3 CD/USB1/LINE** – Input selector for channel 3, USB, CD player or line input
12. **CH.4 PHONO/USB2/LINE/MP3** – Input selector for channel 4, USB, turntable or line/MP3 player
13. **MP3 IN** – 3.5mm stereo jack socket for personal MP3 player or other portable source
14. **MP3 - LINE** – Slide switch to select MP3 input or rear panel line input for channel 4
15. **GAIN** – Individual gain controls for each stereo channel for matching input levels
16. **Hi EQ** – High frequency cut/boost for each stereo channel
17. **Mid EQ** – Middle frequency cut/boost for each stereo channel
18. **Lo EQ** – Low frequency cut/boost for each stereo channel
19. **Fader** – Individual volume fader for each stereo channel
20. **CUE** – Routes channel to meters and headphones for monitoring and cueing tracks
21. **DEFEAT** – Disables crossfader control over stereo channels

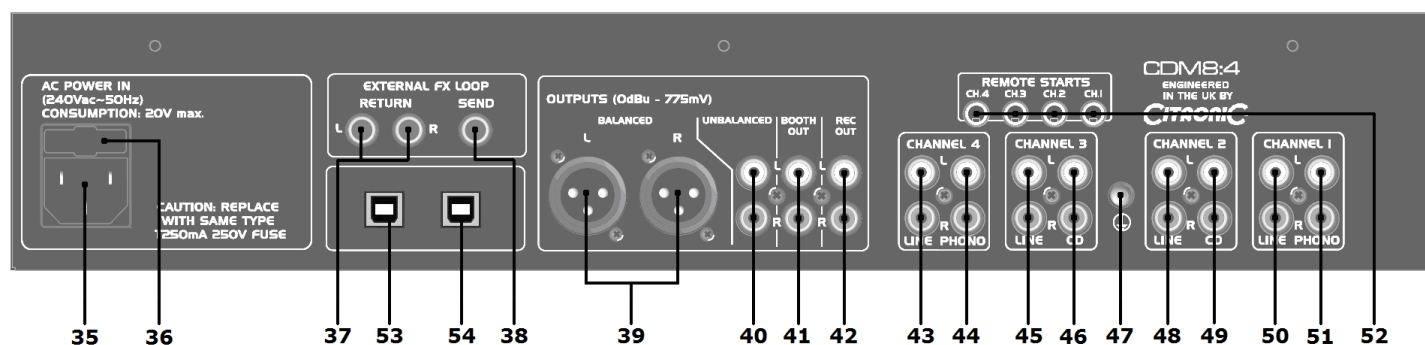
22. **FADER START** – Activates fader start for the channel assigned to the left side of the cross fader.
23. **ASSIGN** – Selects channel 1, 2, 3 or 4 for left side of crossfader
24. **Crossfader** – Allows seamless fading between 2 assigned channels
25. **ASSIGN** – Selects channel 1, 2, 3 or 4 for left side of crossfader.
26. **FADER START** – Activates fader start for the channel assigned to the right side of the cross fader.

### Master Section:



27. **VU Meters** – Dual 10-segment LED volume meters
28. **LEVEL**– Master volume level rotary control
29. **CUE MIX** – Varies headphones signal between cue selected channel(s) and main programme output
30. **12 LIGHT** – BNC connector providing 12Vdc for console light up to 5W output
31. **POWER** – Main power switch and LED indicator
32. **BOOTH LEVEL** – Level control for BOOTH OUTs (39)
33. **Headphones LEVEL** – Headphone volume control
34. **Headphones** – 6.3mm stereo jack socket for headphones output

## Rear Panel:



35. **Mains inlet** – IEC connector to connect to mains using the supplied lead
36. **Fuse Holder** – 20mm mains fuse holder - please note correct rating when replacing
37. **RETURN L+R** – When these 6.3mm jacks are connected to the outputs of an external processor, the output of the external unit will override the internal digital delay effect for Vocal mics 1 + 2.
38. **SEND** – Mono 6.3mm jack to connect to the input of external processors, sending the effect mix from Vocal mics 1 + 2.
39. **OUTPUTS BALANCED** – Balanced XLR L + R main mix outputs
40. **OUTPUTS UNBALANCED** – Unbalanced RCA main mix outputs
41. **BOOTH OUT** – RCA outputs governed by BOOTH LEVEL control (30)
42. **REC OUT** – High frequency cut/boost for each stereo channel
43. **CHANNEL 4 LINE** – RCA L+R inputs for line level source (CD, DVD, MP3, PC etc.) (this input is switchable with the top panel 3.5mm stereo MP3 input)
44. **CHANNEL 4 PHONO** – RCA L+R phono inputs for turntable
45. **CHANNEL 3 LINE** – RCA L+R inputs for line level source (CD, DVD, MP3, PC etc.)
46. **CHANNEL 3 CD** – RCA L+R inputs for CD player (or other line level source)
47. **Ground (earth)** – Screw terminal for grounding equipment to the case of the CDM8:4 USB. Attach turntable ground spade connectors here.
48. **CHANNEL 2 LINE** – RCA L+R inputs for line level source (CD, DVD, MP3, PC etc.)
49. **CHANNEL 2 CD** – RCA L+R inputs for CD player (or other line level source)
50. **CHANNEL 1 LINE** – RCA L+R inputs for line level source (CD, DVD, MP3, PC etc.)

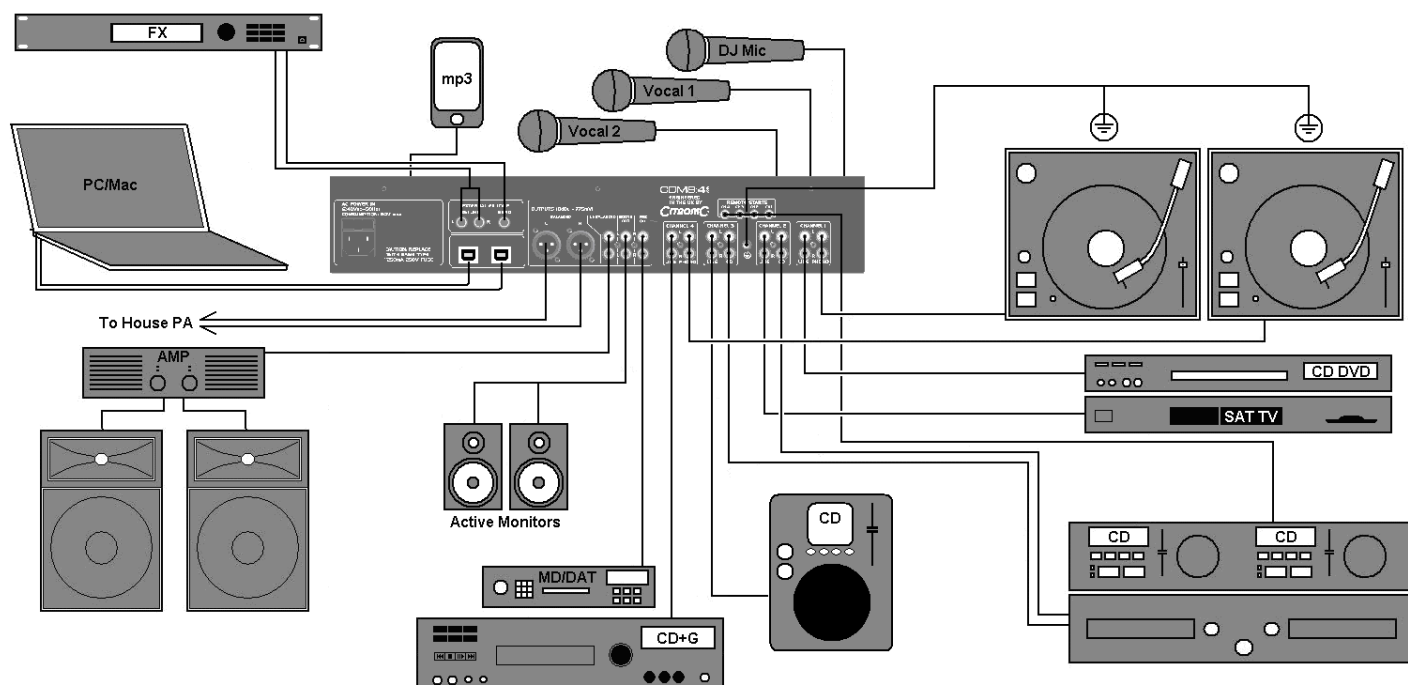
51. **CHANNEL 1 PHONO** – RCA L+R phono inputs for turntable

52. **REMOTE STARTS** – 3.5mm mono jack outputs sending “start” trigger signals from channel faders 1 to 4 to start play on compatible CD players automatically when the fader is moved upward from the lowest point.

53. **USB IN/OUT** – USB B Input/Output for Channel 4

54. **USB IN/OUT** – USB B Input/Output for Channel 3

## Connection Guide:



## Operation:

- Check mains for correct voltage as indicated near to the IEC mains inlet on the rear panel.
- Connect to mains supply using the IEC cable provided.
- Connect the Main unbalanced RCA and/or balanced XLR outputs to the main PA and ensure that the volume levels are turned down to avoid damage.
- Connect the BOOTH outputs to powered booth monitors or separate PA zone.
- Connect any turntables to the RCA PHONO inputs on ch.1 and ch.2.
- Earth turntables to the case grounding point on the rear panel
- Connect CD players or other line output sources to the CD inputs.
- Connect CD, CD+G, laptop, TV decoder, DVD or MP3 players to LINE inputs.
- Connect DJ mic and Vocal mics 1 + 2 to the top panel jack/XLR combo sockets
- If required, connect personal MP3 player to top panel 3.5mm input
- Connect headphones to the HEADPHONE jack
- With MASTER LEVEL down, switch the power on.
- Ensure microphone levels are turned down
- Gradually increase MASTER LEVEL and channel levels to check input signals.
- Be aware that the CROSSFADER also operates across assigned channels - this can be bypassed by pressing DEFEAT.
- To use crossfader, select channels using the ASSIGN levers, ensure DEFEAT is off and the crossfader will then seamlessly blend between these 2 channels.
- Gradually increase microphone channel levels to check microphone signals.
- Monitor each stereo channel via headphones selecting using the CUE switches
- Whilst a channel is on CUE, adjust the GAIN so that LED meters show a full signal without showing "in the red" (overload)
- Adjust Hi, Mid and Lo EQ settings to the desired tonal effect
- When using the DJ mic, push the ON AIR switch and if required, push MANUAL OVERRIDE to drop the music level by a fixed amount whilst talking.
- Adjust Hi and Lo EQ and DJ MIC level settings to suit.
- For singers and karaoke, increase the levels of Vocal mics 1 + 2 and adjust Hi and Lo EQ settings to suit.
- For each vocal mic, adjust DELAY level to the desired amount, variation in the time between delay repeats can be adjusted via the TIME rotary.
- Should a different effect (eg. Reverb, compression, DSP) be required, connecting SEND on the rear panel to an external processor's input and the processor's output(s) to the rear panel RETURNS will serve as an effects loop, overriding the internal delay effect. The DELAY controls will now act as an external effects mix.
- When not being used, turn down the Vocal mic levels to avoid unwanted noise.



## Troubleshooting

### NO OUTPUT -

- Check mains power is on
- Check leads and connections
- Check MASTER LEVEL and mic or channel fader is turned up
- Check CROSSFADER by trying the DEFEAT switch

### DISTORTED OUTPUT -

- Check line input isn't connected to PHONO
- Check channel and MASTER faders are not too high
- Check volume control of amplifier, active speakers or recording equipment

### MICROPHONE FEEDBACK

- Eliminate "line-of-sight" between mic(s) and speakers
- Check DELAY is not set too high
- Adjust Hi or Lo EQ and/or level controls

### MICROPHONE OUTPUT

- No output – check if mic switched off
- No output – check if phantom power source is required
- Low output – ensure mic is not switched to "pad" or "Hi Z"
- Quiet vocals – ask singer to sing closer to mic.

### DELAY EFFECT

- Metallic effect but no delay – increase TIME control to produce more natural echo
- No delay effect – increase DELAY controls, check nothing is plugged into RETURNS

### TOO QUIET -

- Check turntable is not connected to line input
- Check channel and MASTER faders are not too low
- Check for volume control on sound source

## Specifications

Parameter	Mic	Phono	Line/CD
Sensitivity	-53dBu (1.73mV)	46dBu (4mV)	0dBu (775mV)
Input Impedance	2K	47K	50K
Max Gain	50dB		<-70 to +10dB
S/N Ratio	68dB	73dB	> 87dB
Freq Response	25Hz to 30KHz	RIAA	< 10Hz to 24 KHz
THD	0.042%		< 0.005%

### Microphone Equalisation

Lo = ± 12dB @ 80Hz  
 Mid = ± 12dB @ 600Hz  
 Hi = ± 12dB @ 6KHz

### Music Channel Equalisation

Lo = ± 12dB @ 100Hz  
 Mid = ± 12dB @ 1KHz  
 Hi = ± 12dB @ 10KHz

### Noise Floor

Main L, R Output: < -100dBu  
 Mic Pre-Amp T.E.I.N. - 118dBu

### Headphones

Load: 32 Ohms MIN  
 Power: 112mV @ 32 Ohms  
 Freq Response: 11Hz to 25KHz  
 S/N 81dB

### Output

Master L, R Output: Balanced XLR: 0 dBu (775mV rms)  
 Unbalanced Phono: 0 dBu (775mV rms)  
 Booth, Aux Outputs: Unbalanced Phono: 0 dBu (775mV rms)

**Dimensions:** Width: 483mm (19") Height: 177mm (4U) Depth: 95mm

**Weight:** 5kg

**Cut-out required:** Width: 440mm Height: 165mm



**Disposal:** The "Crossed Wheelie Bin" symbol on the product means that the product is classed as Electrical or Electronic equipment and should not be disposed with other household or commercial waste at the end of its useful life. The goods must be disposed of according to your local council guidelines.

*Errors and omissions excepted. Copyright© 2021.*  
 AVSL Group Ltd, Unit 2-4 Bridgewater Park, Taylor Rd. Manchester. M41 7JQ  
 AVSL (EUROPE) Ltd, Unit 3D North Point House, North Point Business Park, New Mallow Road, Cork, Ireland